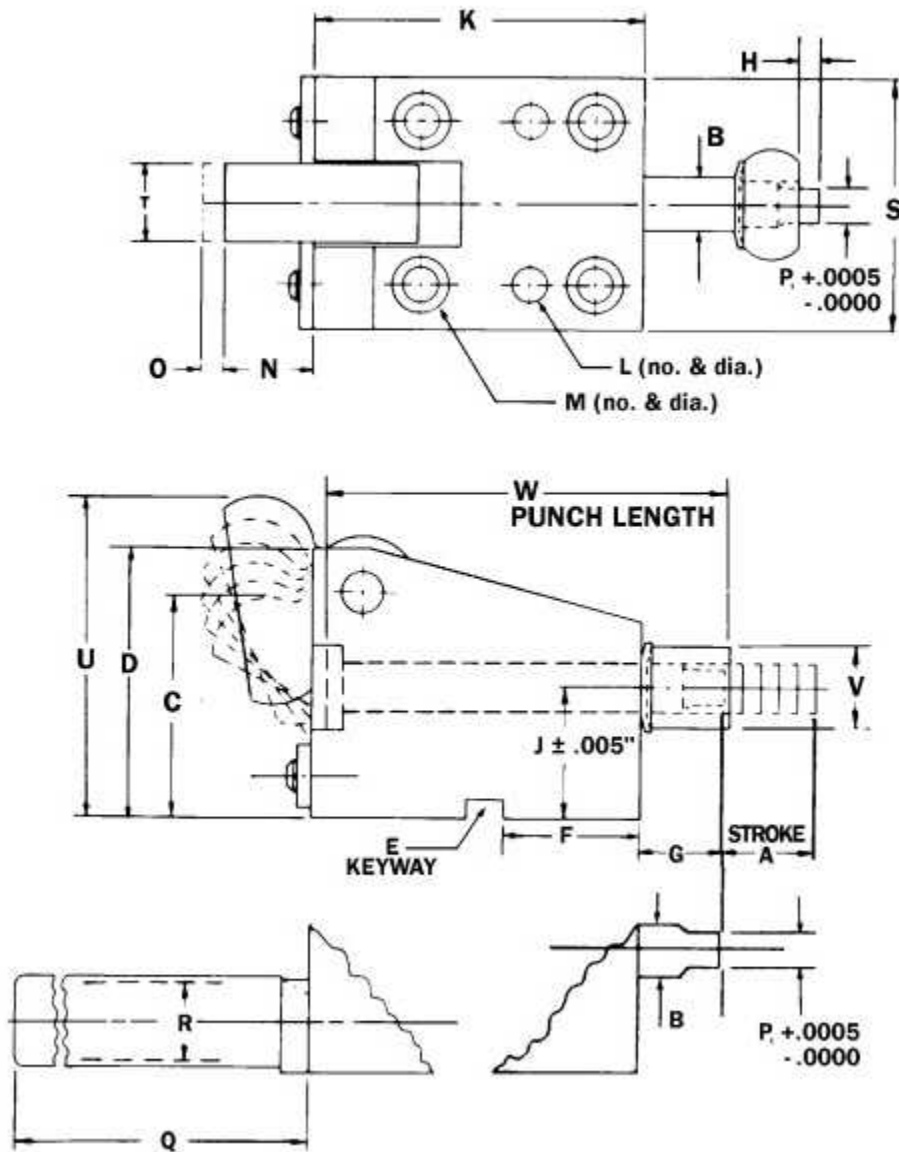


DIMENSIONS KEY (here) -- [View Models: 250,375,500,625,75](#) -- [View Models: 87,100,125,137,150](#)



[Dimensions Key](#) -- View Models (here): 250,375,500,625,75 -- [View Models: 87,100,125,137,150](#)

<u>SPECIFICATIONS AND DIMENSIONS</u>										
MODEL:	S250	L250	S375	L375	S500	L500	S625	L625	S75	L75

<b>Max. material thickness</b>	1/16	1/16	1/16	1/16	1/16	1/16	1/16	1/16	1/8	1/8
<b>Max. tons</b>	1.5	1.5	3	3	5	5	8	8	15	15
<b>Stripping force</b>										
<b>Inboard lbs.</b>	370	370	440	440	460	460	570	570	690	690
<b>Outboard lbs.</b>	140	140	300	300	300	300	540	540	830	830
<b>Gas Spring lbs.</b>	N/A	N/A	N/A	N/A	N/A	N/A	N/A	N/A	1420	1420
<b>Punch stroke with standard trigger</b>										
<b>A - Stroke</b>	3/8	3/4	1/2	7/8	5/8	1	3/4	1 1/8	1 1/4	2
<b>Punch stroke with offset trigger</b>										
<b>A - Inboard</b>	3/8	21/32	1/2	11/16	5/8	25/32	3/4	1 1/16	1 7/64	1 1/16
<b>A - Outboard</b>	11/32	11/32	1/2	31/64	5/8	21/32	11/16	11/16	3/4	3/4
<b>B - Shank dia. (mm)</b>	250	250	.375	.375	.500	.500	.625	.625	.750	.750
<b>(mm)</b>	6	6	10	10	13	13	16	16	20	20
<b>Max. point dia.</b>										
<b>Inboard</b>	.187	.187	.312	.312	.437	.437	.562	.562	.687	.687
<b>Outboard</b>	.250	.250	.375	.375	.500	.500	.625	.625	.750	.750
<b>C - Shut ht.</b>	1 11/16	1 5/16	2 3/16	1 13/16	2 1/4	1 7/8	2 1/2	2 3/16	3 1/8	2 9/16
<b>D -</b>	1 3/4	1 3/4	2 1/4	2 1/4	2 1/2	2 1/2	3	3	3 3/4	3 3/4
<b>E - Keyway</b>	3/16 x 3/32	3/16 x 3/32	1/4 x 1/8	1/4 x 1/8	5/16 x 5/32	5/16 x 5/32	3/8 x 3/16	3/8 x 3/16	1/2 x 1/4	1/2 x 1/4
<b>F -</b>	1/2	1	11/16	1 3/16	13/16	1 1/4	1	1 7/8	1 7/8	1 7/8
<b>G -</b>	7/8	7/8	7/8	7/8	7/8	7/8	7/8	7/8	1 1/8	1 1/8
<b>H -</b>	1/4	1/4	1/4	1/4	1/4	1/4	1/4	1/4	3/8	3/8
<b>J - Inboard</b>	.812	.812	1.125	1.125	1.187	1.187	1.500	1.500	1.812	1.812
<b>J - Outboard</b>	.812	.812	1.125	1.125	1.187	1.187	1.500	1.500	1.812	1.812
<b>K -</b>	1 3/4	2 3/4	2 1/4	3 1/4	2 1/2	3 1/2	3	4	4 1/2	6 1/2
<b>L - (No &amp; dia)</b>	(2) 1/4	(2) 1/4	(2) 5/16	(2) 5/16	(2) 5/16	(2) 5/16	(2) 3/8	(2) 3/8	(2) 1/2	(2) 1/2
<b>(mm)</b>	6	6	8	8	8	8	10	10	16	16

<b>M - (No &amp; dia)</b>	(2) 1/4	(4) 1/4	(2) 5/16	(4) 5/16	(2) 5/16	(4) 5/16	(2) 3/8	(4) 3/8	(4) 1/2	(6) 1/2
<b>(mm)</b>	6	6	8	8	8	8	10	10	14	14
<b>N -</b>	1/2	1/2	5/8	5/8	5/8	5/8	5/16	5/16	1 7/32	1 7/32
<b>O -</b>	3/16	3/16	1/4	1/4	1/4	1/4	3/16	3/16	3/8	3/8
<b>Q -</b>	2 7/8	4 1/8	3 7/8	5 3/8	4 3/8	5 7/8	4 7/8	6 3/8	6 3/8	9 3/8
<b>R -</b>	5/8	5/8	3/4	3/4	3/4	3/4	1	1	1 1/4	1 1/4
<b>S -</b>	1 3/4	1 3/4	2 1/4	2 1/4	2 1/2	2 1/2	3	3	3 1/2	3 1/2
<b>T -</b>	5/8	5/8	3/4	3/4	7/8	7/8	1	1	1 1/8	1 1/8
<b>U -</b>	2 1/8	2 1/8	2 11/16	2 11/16	2 7/8	2 7/8	3 3/8	3 3/8	4 29/64	4 29/64
<b>V -</b>	.687	.687	.812	.812	.875	.875	1.000	1.000	1.125	1.125
<b>W -</b>	2 1/2	3 1/2	3	4	3 1/4	4 1/4	3 3/4	4 3/4	5 1/2	7 1/2
<b>MODEL:</b>	<b>S250</b>	<b>L250</b>	<b>S375</b>	<b>L375</b>	<b>S500</b>	<b>L500</b>	<b>S625</b>	<b>L625</b>	<b>S75</b>	<b>L75</b>

[Dimensions Key](#) -- [View Models: 250,375,500,625,75](#) -- [View Models: 87,100,125,137,150](#)  
(here)

<b><u>SPECIFICATIONS AND DIMENSIONS</u></b>										
<b>MODEL:</b>	<b>S87</b>	<b>L87</b>	<b>S100</b>	<b>L100</b>	<b>S125</b>	<b>L125</b>	<b>S137</b>	<b>L137</b>	<b>S150</b>	<b>L150</b>
<b>Max. material thickness</b>	1/8	1/8	1/8	1/8	1/4	1/4	1/4	1/4	1/4	1/4
<b>Max. tons</b>	15	15	15	15	25	25	25	25	25	25
<b>Stripping force</b>										
<b>Inboard lbs.</b>	710	710	1020	1020	1050	1050	1090	1090	1120	1120
<b>Outboard lbs.</b>	830	830	830	830	1650	1650	1650	1650	1650	1650
<b>Gas Spring lbs.</b>	1420	1420	1420	1420	4930	4930	4930	4930	4930	4930
<b>Punch stroke with standard trigger</b>										
<b>A - Stroke</b>	1 1/4	2	1 1/4	2	1 1/2	2 1/2	1 1/2	2 1/2	1 1/2	2 1/2
<b>Punch stroke with offset trigger</b>										
<b>A - Inboard</b>	1 7/64	1 1/16	1 7/64	1 1/16	1 1/2	2 1/2	1 1/2	2 1/2	1 1/2	2 1/2

<b>A - Outboard</b>	3/4	3/4	3/4	3/4	1 1/2	2 1/64	1 1/2	2 1/64	1 1/2	2 1/64
<b>B - Shank dia. (mm)</b>	.875	.875	1	1	1.250	1.250	1.375	1.375	1.500	1.500
<b>(mm)</b>	N/A	N/A	25	25	N/A	N/A	N/A	N/A	N/A	N/A
<b>Max. point dia.</b>										
<b>Inboard</b>	.812	.812	.937	.937	1.125	1.125	1.250	1.250	1.375	1.375
<b>Outboard</b>	.875	.875	1.000	1.000	1.250	1.250	1.375	1.375	1.500	1.500
<b>C - Shut ht.</b>	3 1/8	2 9/16	3 1/8	2 9/16	5 3/16	4 5/16	5 3/16	4 5/16	5 3/16	4 5/16
<b>D -</b>	3 3/4	3 3/4	3 3/4	3 3/4	5 1/2	5 1/2	5 1/2	5 1/2	5 1/2	5 1/2
<b>E - Keyway</b>	1/2 x 1/4	1/2 x 1/4	1/2 x 1/4	1/2 x 1/4	1/2 x 1/4	1/2 x 1/4	1/2 x 1/4	1/2 x 1/4	1/2 x 1/4	1/2 x 1/4
<b>F -</b>	1 7/8	1 7/8	1 7/8	1 7/8	2 1/8	2 1/2	2 1/8	2 1/2	2 1/8	2 1/2
<b>G -</b>	1 1/8	1 1/8	1 1/8	1 1/8	1 5/8	1 5/8	1 5/8	1 5/8	1 5/8	1 5/8
<b>H -</b>	3/8	3/8	3/8	3/8	3/8	3/8	3/8	3/8	3/8	3/8
<b>J - Inboard</b>	1.812	1.812	1.812	1.812	2.625	2.625	2.625	2.625	2.625	2.625
<b>J - Outboard</b>	1.750	1.750	1.687	1.687	2.625	2.625	2.625	2.625	2.625	2.625
<b>K -</b>	4 1/2	6 1/2	4 1/2	6 1/2	6	8 1/2	6	8 1/2	6	8 1/2
<b>L - (No &amp; dia)</b>	(2) 1/2	(2) 1/2	(2) 1/2	(2) 1/2	(2) 1/2	(2) 1/2	(2) 1/2	(2) 1/2	(2) 1/2	(2) 1/2
<b>(mm)</b>	16	16	16	16	16	16	16	16	16	16
<b>M - (No &amp; dia)</b>	(4) 1/2	(6) 1/2	(4) 1/2	(6) 1/2	(4) 1/2	(6) 1/2	(4) 1/2	(6) 1/2	(4) 1/2	(6) 1/2
<b>(mm)</b>	14	14	14	14	14	14	14	14	14	14
<b>N -</b>	1 7/32	1 7/32	1 7/32	1 7/32	1 15/16	1 15/16	1 15/16	1 15/16	1 15/16	1 15/16
<b>O -</b>	3/8	3/8	3/8	3/8	3/8	3/8	3/8	3/8	3/8	3/8
<b>Q -</b>	6 3/8	9 3/8	6 3/8	9 3/8	7 1/2	11 1/2	7 1/2	11 1/2	7 1/2	11 1/2
<b>R -</b>	1 1/4	1 1/4	1 1/4	1 1/4	1 1/2	1 1/2	1 1/2	1 1/2	1 1/2	1 1/2
<b>S -</b>	3 1/2	3 1/2	3 1/2	3 1/2	4	4	4	4	4	4
<b>T -</b>	1 1/8	1 1/8	1 1/8	1 1/8	1 5/8	1 5/8	1 5/8	1 5/8	1 5/8	1 5/8
<b>U -</b>	4 29/64	4 29/64	4 29/64	4 29/64	6 11/16	6 11/16	6 11/16	6 11/16	6 11/16	6 11/16
<b>V -</b>	1.375	1.375	1.625	1.625	1.875	1.875	2.125	2.125	2.375	2.375
<b>W -</b>	5 1/2	7 1/2	5 1/2	7 1/2	7 1/2	10	7 1/2	10	7 1/2	10
<b>MODEL:</b>	<b>S87</b>	<b>L87</b>	<b>S100</b>	<b>L100</b>	<b>S125</b>	<b>L125</b>	<b>S137</b>	<b>L137</b>	<b>S150</b>	<b>L150</b>

---